



NORDEX
DOORS



*There are
things known
and there are things
unknown
and in between
there are the
doors ...*

Commercial • Industrial • Domestic Doors

Founded in 1989, Sydney-based *Nordex Doors* has established a hallmark status as a manufacturer and supplier of superior quality timber veneered, MDF, Particleboard and Blockboard doors.

Nordex Doors' expertise lies within the sphere of creative specialty products where the company has gained a solid reputation for an end result that is creating a stir with architects, builders, fit-out companies and home-owners alike.

Built to any specification, *Nordex Doors* products are the result of a clever blend of craftsmanship and design concepts using the finest timber, for e.g. matching doors with timber floors.

Nordex Doors products are manufactured using state-of-the-art equipment.

Nordex Doors is more than just a producer of quality products. From original design through to final installation, we can help you build upon your initial thoughts and provide those invaluable insights and fresh ideas that will ensure complete customer satisfaction.

Our extensive choice of species

Australian & New Zealand Species

- Blackbean
- Blackbutt
- Blackwood
- Brushbox
- Celery Top Pine
- Coachwood
- Gum (blue, red, rose, spotted)
- Ironbark
- Hoop Pine
- Jarrah
- Karri
- Myrtle
- New Zealand Beech
- Poplar
- Qld Maple
- Qld Walnut
- Red Cedar (Kalantas)
- Rimu
- Sassafras (Golden & Blackheart)
- Silky Oak
- Silver Ash
- Tas Ash (& VIC)
- Tas Oak (& VIC)
- Turpentine (Luster)
- White Birch

Imported Species

- Alder
- Ame Cherry
- Ame Walnut
- Anegre
- Birch (quilted, curly)
- Birds Eye Maple
- Brazilian Mahogany
- Bubinga
- Euro Ash (Ame)
- Euro Beech (steamed/unsteamed)
- Euro Birch
- Euro Oak (Ame)
- Koto
- Nyatoh
- Oregon
- Palisander
- Pearwood
- Pine
- Pommele (Makore or Sapele)
- Rimu
- Rock Maple
- Rosewood
- Sapele Mahogany
- Sen Ash (Jap Sen)
- Sliced Pacific Maple (SPM)
- Sycamore
- Teak
- Wenge
- Western Red Cedar
- Zebrano

Reconstituted Veneers

- New Age Veneers



European Beech veneered door with vision panel



Rock Maple veneered door with half glass



European Beech veneered door with two viewing panels

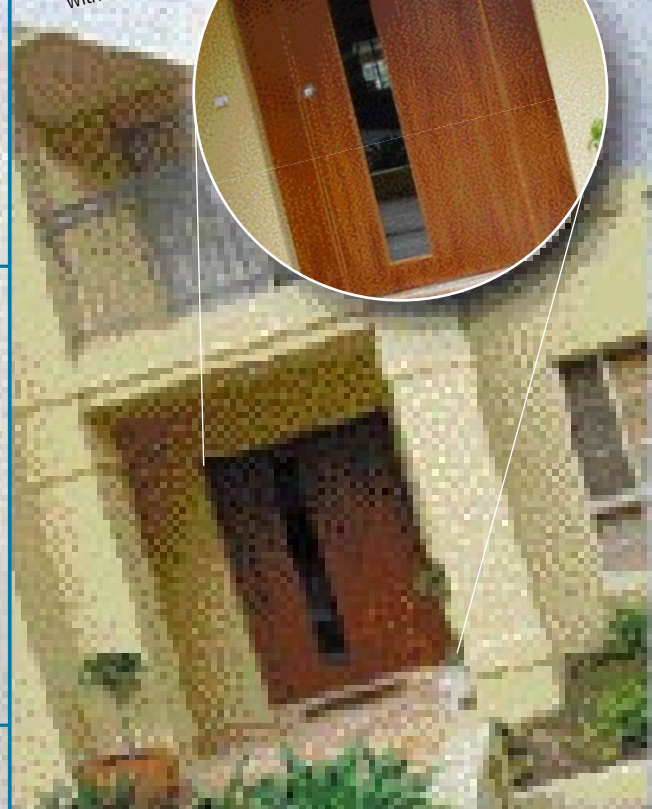


Black Heart Sassafras veneered door

Blue Gum Door with viewing panel



Birdseye Maple double doors with stainless steel strips

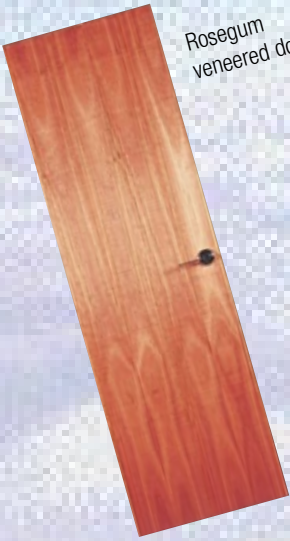


*“Creating a world where
doors are seen as a
vital piece of your
furniture”*

Jarrah veneered door
with port hole



Rosegum
veneered door



Tasmanian Oak
veneered door



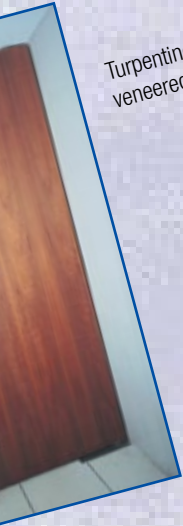
American Oak
veneered door



Metal Clad door
with rivets



Turpentine
veneered door



Rock Maple veneered
door with full length
viewing panel



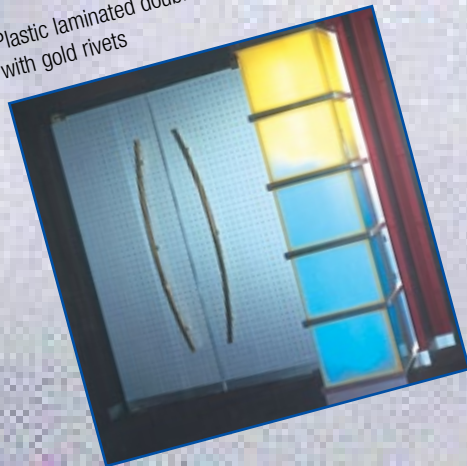
Curly Birch
veneered door
with fixed head panel



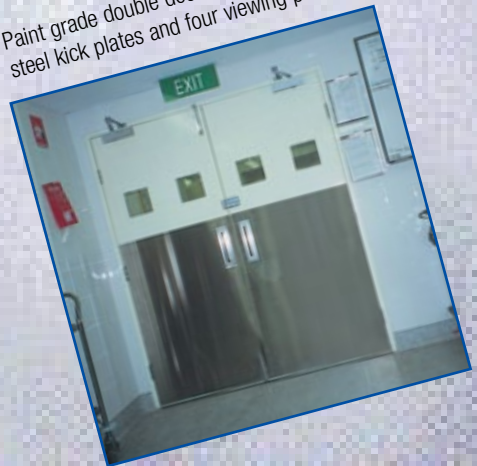
Rosegum
veneered door



Plastic laminated double doors
with gold rivets



Paint grade double doors with stainless
steel kick plates and four viewing panels



Nordex Doors is proud to maintain a strict environmental code and as such, buys and sells environmentally-friendly products and sources the majority of its materials from regrowth forest harvested timber.

Offering a wide choice of modern contemporary designs **Nordex Doors** only selects its materials from quality approved suppliers with all products conforming to Australian Standards. These include:

- Solid MDF doors
- Solid Blockboard core doors (premium and commercial grade)
- Hollow core doors
- Timber-veneered doors
- Plastic laminated doors
- Metal clad doors
- Joinery doors (in exotic timbers)
- Cavity Sliders



ADDITIONAL SERVICES

- polishing
- glazing
- provision for hardware
- site measuring
- installation
- supply of jambs

DELIVERY

Nordex Doors' factory is centrally located in Silverwater ensuring easy 'door to door' delivery anywhere in the Sydney metropolitan area.

WARRANTY

All **Nordex Doors** products are supported by first-class customer service and covered by a manufacturers guarantee / warranty against defective workmanship and materials.



84 Vore Street,
Silverwater NSW 2128
Telephone: 02 9737 9688
Facsimile: 02 9737 9075
Email: nordex@ihug.com.au

SHOWROOM

Sydney Building Information Centre
517-531 Elizabeth Street,
Surry Hills NSW 2010